

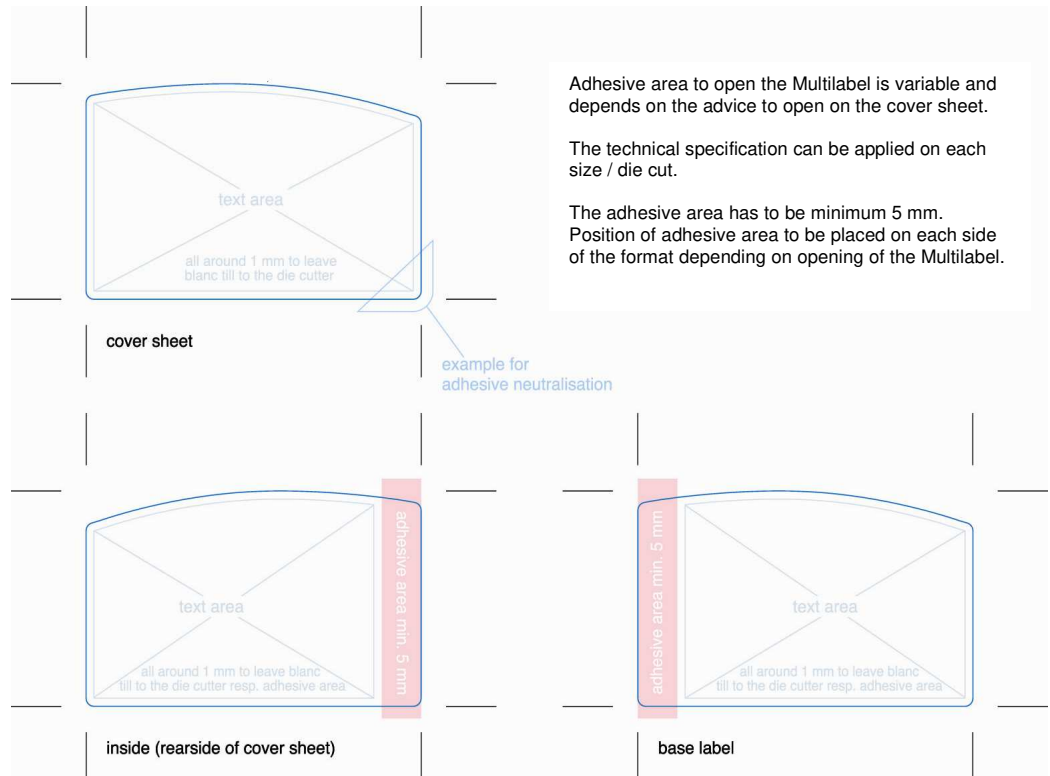
- Pictures** Please do not save pictures in RGB – but always in CMYK.
The converting of RGB into CMYK is necessary for print and causes additional time, effort and costs.
Approximately the same colours can be obtained when using RGB-templates.
EXCEPTIONS are duplex-pictures – those should be saved as duplex.
- Resolution** Pictures need for the printed size 300 dpi minimum;
Graphics, bitmaps and line drawings need 1200 dpi minimum.
- Spreading** The kind of trapping depends on the printing technique and therefore colours **must not be** trapped in the document.
Trim outside the cutting rules should be at least 1.5 mm for sloping sujets.
- Varnish and white background** Please identify partial varnish/white background as separate colour with description “window varnish” or “white background” or “partial varnish” as an “extra print”/ “layer”. This should be clearly and visible defined.
- Stamping/ embossing** Identify stamped parts as separate colour.
- Fonts** All fonts used in the document have to be provided respectively converted into outlines.
- Die-cut outline / special die-cut forms** Die-cut forms - especially special die-cut forms – should be clearly visible as vector shape and be marked in a special colour.
- Technical specification**
minimum line thickness:
positive: 0,1 mm (recommended 0,2 mm)
negative: 0,2 mm (recommended 0,4 mm, especially on uncoated paper)
minimal point size: positive: 4 pt negative: 5 pt
minimum dot gain for flexoprint: 2 %
trim requirement: 1,5 mm
minimum distance from text and graphic elements to trim: 1 mm
sloping frames, thickness minimum: 1 mm
- Printable PDF** PDF-instruction as a template for printing:
- version 1.7 or higher
- minimum resolution of 300 dpi with 100 % scale
- convert text into path/outline
- spot colours (e.g. Pantone-, spot colour, etc.) to be applied as separate colour
- fonts that cannot be converted into path/outline
- IBM-PC** Because our pre-press department works with Apple Macintosh sometimes there are problems with converting fonts. If possible, please, convert text into outline.
- Text out of Microsoft programmes** Data out of these programmes are difficult to convert and connected with extensive working hours. In individual cases, fonts have to be completely reset and additional typesetting costs have to be charged.

**PowerPoint/Word
Used programmes**

	Artpro	Photoshop	Illustrator	In-Design
IBM-PC		●	●	
Apple	●	●	●	●

Additionally there must be control pdf

**Multilabels/
Booklets**
Example with
specifications



Data description

If you send us data, please pass on an attachment with the following information: company (customer), graphics studio, contact person, colour(s), size and further information about the data that is important.

Avoid special characters and symbols in the file-name e.g. æ, ç, è, ñ.

Adoption of data

Because of our technical equipment we prefer Apple-programms!

- Per e-mail: daten@ulrich.at
- Links for your download – please announce user name and password
- FTP-Server: Please speak to your contact person and request ftp-access
- Data carrier

Data approval

According to the Ulrich quality management system (UQM) our press operators need an approved artwork.

1. **Screened prints, pictures or fading printed for the first time:**
You receive a digiproof by postal mail which simulates the printed label (colours just approximate the output on the printing machine). Please approve/correct the digiproof by e-mail. Our internal sales administration retain a copy.
2. **Line/surface or change request of a screened picture/fading:**
We provide PDF-data per e-mail or on our customer portal.
3. **If you provide us already finished data:**
new halftone print– in this case we create a digiproof (see point 1).

**Information on our
printing techniques**

In most cases Ulrich Etiketten Ges.m.b.H. uses rotary press - from reel to reel where plates will be put on rotary cylinders. Depending on the type of machine die-cuts are flat (steel-rule die-cutting) or rotary (engraved die-cut cylinder or tin die-cut on magnetic cylinder).

Print processes: UV-Flexo, UV-screen, UV-offset, digital printing as well as varnish (partial or full), hotfoil/coldfoil stamping, relief stamping.

Depending on the printing process different work preparations are necessary.

Help

If you have questions, please do not hesitate to contact our employees in the pre-press department at ☎ +43/1/271 39 40-54

ATTENTION!

Inappropriate or bad data formats must be converted. This work has to be charged!